

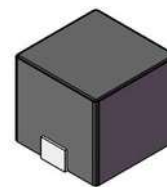
# SMD Power Inductor

## CDPH79D72



### Description

- Ferrite core construction
- Magnetically shielded
- LxWxH: 8.8x8.2x7.5mm Max.
- Product weight: 1.87g(Ref.)
- Moisture Sensitivity Level: 1
- RoHS compliance



### Environmental Data

- Operating temperature range: -40°C~+125°C (including coil's self temperature rise)
- Storage temperature range: -40°C~+125°C

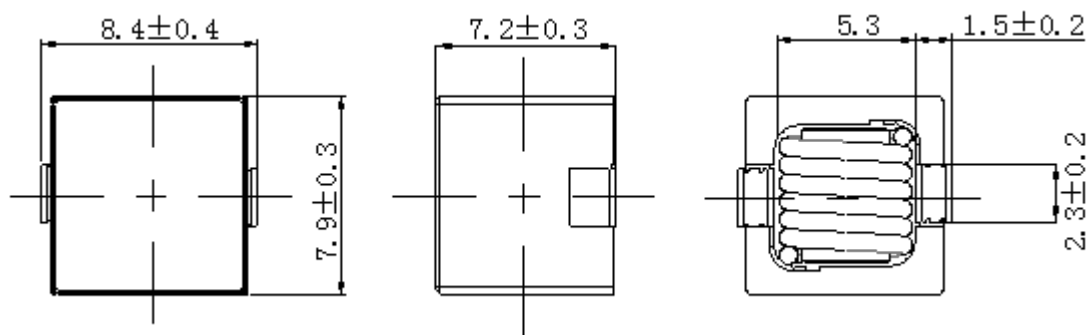
### Packaging

- Carrier tape and reel packaging
- 500pcs per reel

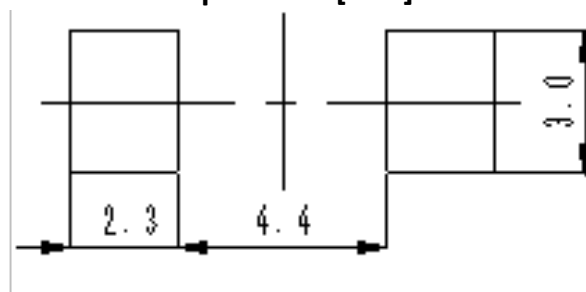
### Applications

- Filter choke for DC/DC converter
- Single and polyphase buck converter
- Input filter inductor for DC/DC converter

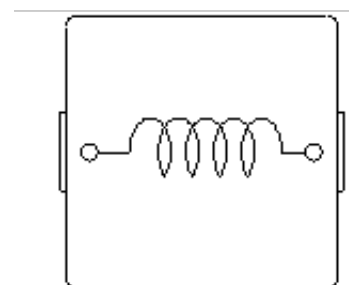
### Dimension - [mm]



### Recommended Land pattern - [mm]



### Wire Connection



Note: This specification is subject to change without notice. Please contact your nearest sales office for updated information when placing an order.

# SMD Power Inductor

## CDPH79D72



### Electrical Characteristics

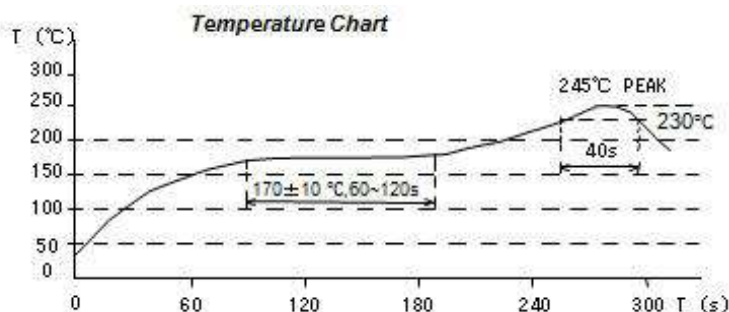
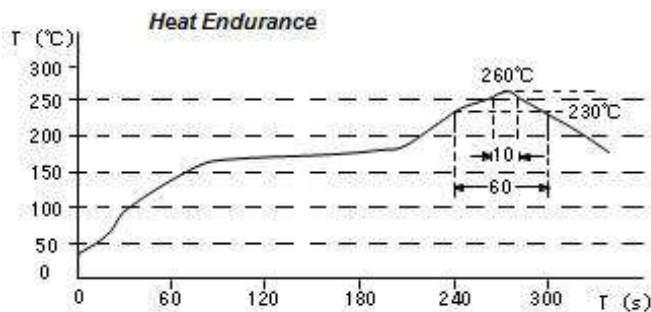
Part Number	Inductance [Within] ( $\mu$ H) ※1	D.C.R. at 20°C (A) Within ( $m\Omega$ )	Saturation Current (A) Max. (Typ.) ※2	Temperature Rise Current (A) (Typ.) ※3
CDPH79D72NP-2R2MC	$2.20 \pm 20\%$	$4.60 \pm 10\%$	10.00 (12.50)	(16.50)
CDPH79D72NP-6R8MC	$6.80 \pm 20\%$	$22.50 \pm 10\%$	6.00 (7.50)	(5.50)

※1 Measuring condition: 100kHz.

※2 Saturation current: This indicates the value of D.C. current when the inductance becomes 30% lower than its initial value. (Ta=20°C).

※3 Temperature rise current: The value of D.C. current when the temperature of coil becomes  $\Delta T=40^\circ\text{C}$ . (Ta=20°C).

### Solder Reflow Condition



# SMD Power Inductor

## CDPH79D72

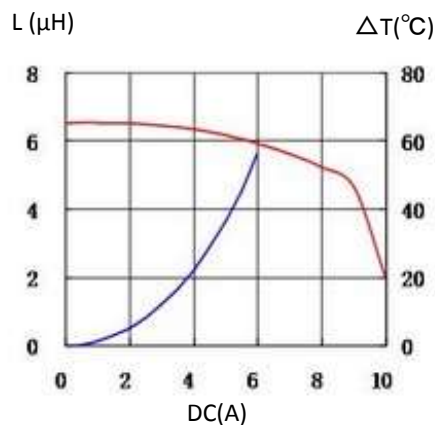
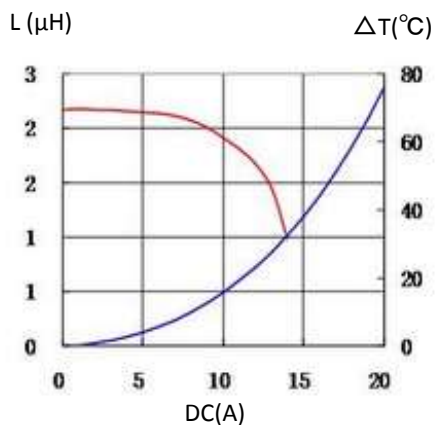


### Saturation Current & Temperature Rise Graph

— L (20°C) —  $\Delta T$

1. CDPH79D72NP-2R2MC

2. CDPH79D72NP-6R8MC



For sales office information, please [click here](#) to visit our website.